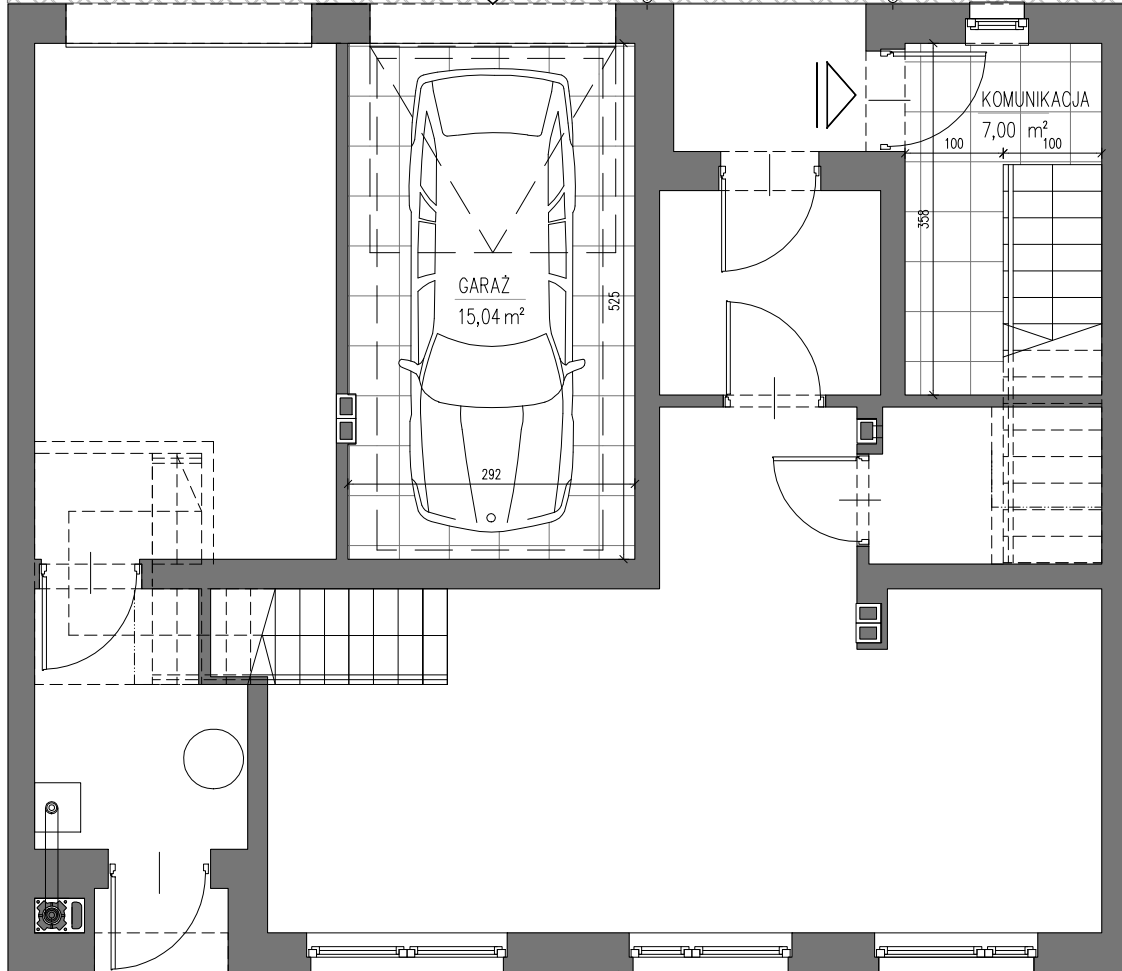
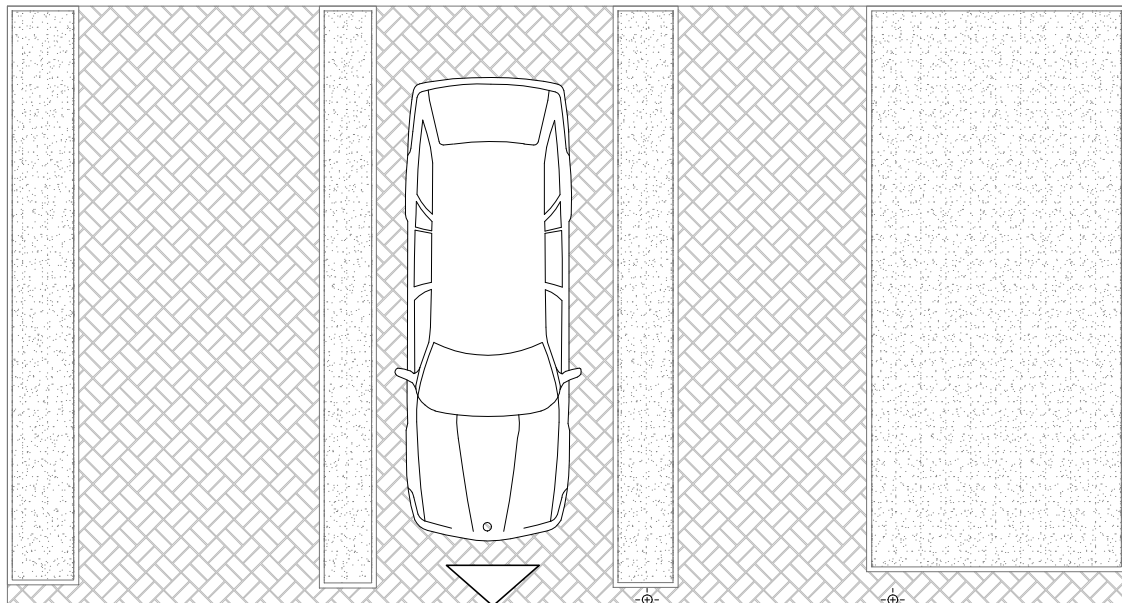


# BUDYNEK A3



PARTER

**MIESZKANIE** 66,45m<sup>2</sup>

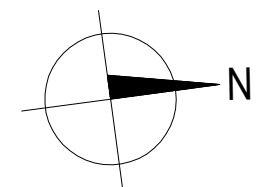
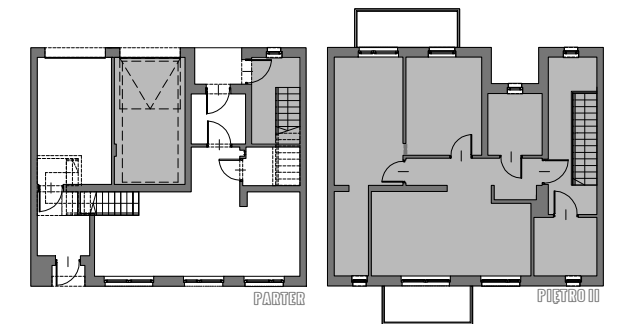
**BALKONY I TARASY** 11,54m<sup>2</sup>

**GARAŻ** 15,04m<sup>2</sup>

**KOMUNIKACJA I POM.TECH.** 36,74m<sup>2</sup>



PIĘTRO II



GENA LOKALU brutto.....

# MIESZKANIE 6

