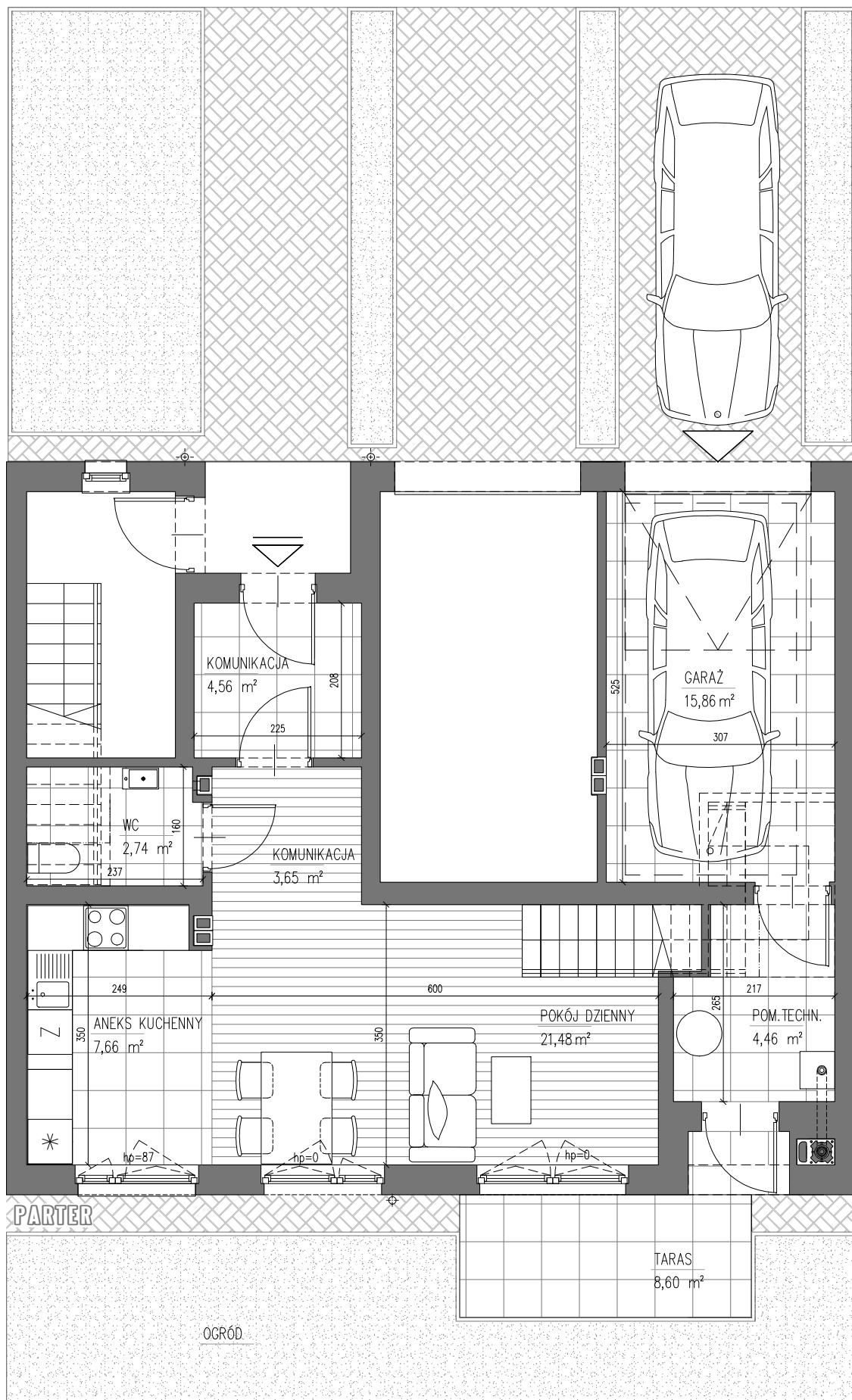


# BUDYNEK B2



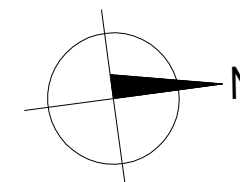
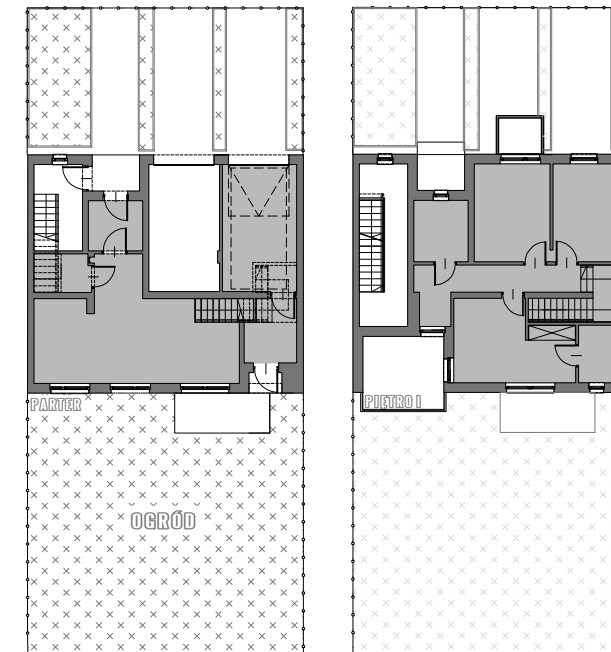
**MIESZKANIE** 96.38m<sup>2</sup>

**BALKONY I TARASY** 21.34m<sup>2</sup>

**GARAŻ** 15.86m<sup>2</sup>

**KOMUNIKACJA I POM.TECH.** 9.02m<sup>2</sup>

**OGRÓD** 113.0m<sup>2</sup>



# MIESZKANIE 3

GENA LOKALU brutto.....

