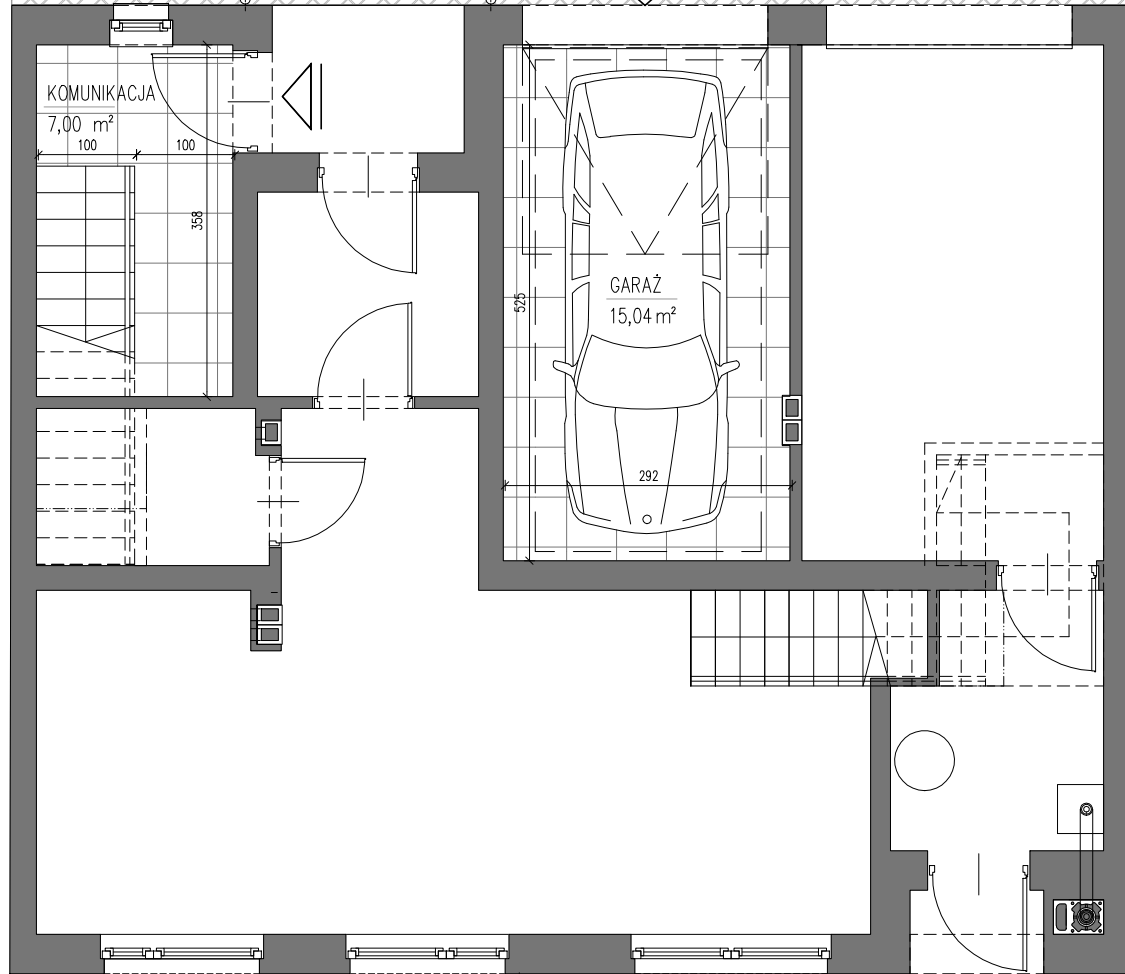
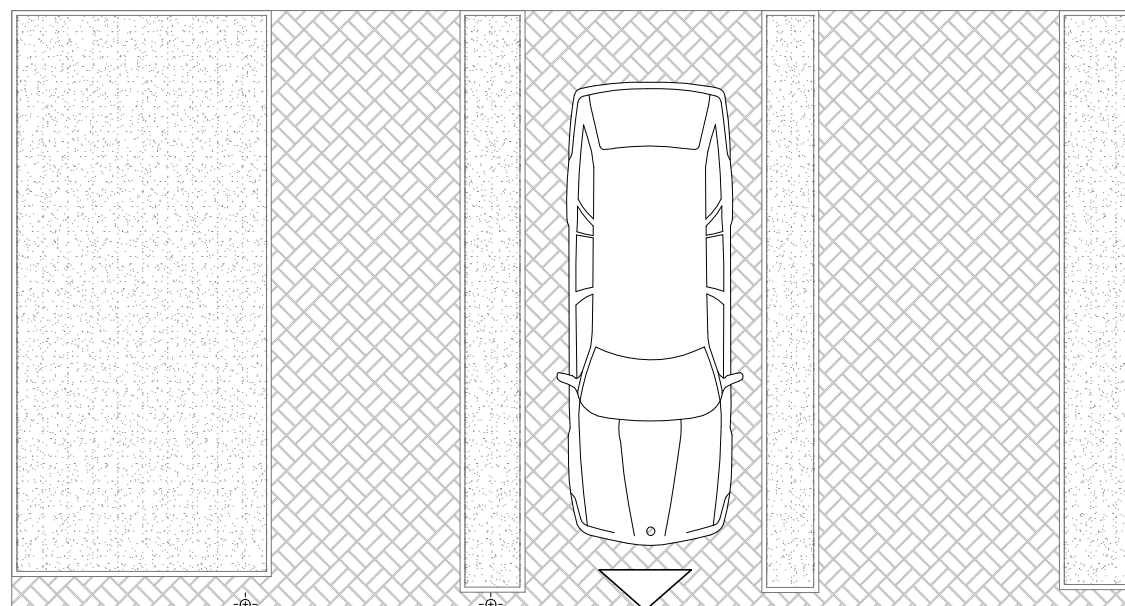


# BUDYNEK B2



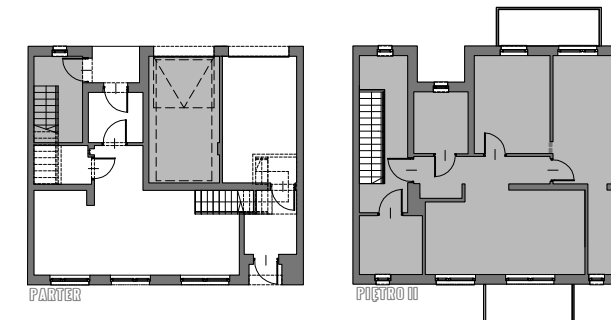
PARTER

MIESZKANIE 66.45m<sup>2</sup>

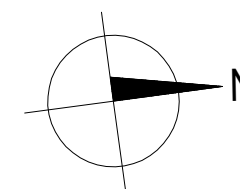
BALKONY I TARASY 11.54m<sup>2</sup>

GARAŻ 15.04m<sup>2</sup>

KOMUNIKACJA I POM.TECH. 36.74m<sup>2</sup>



PIĘTRO II



GENA LOKALU brutto.....

# MIESZKANIE 4

