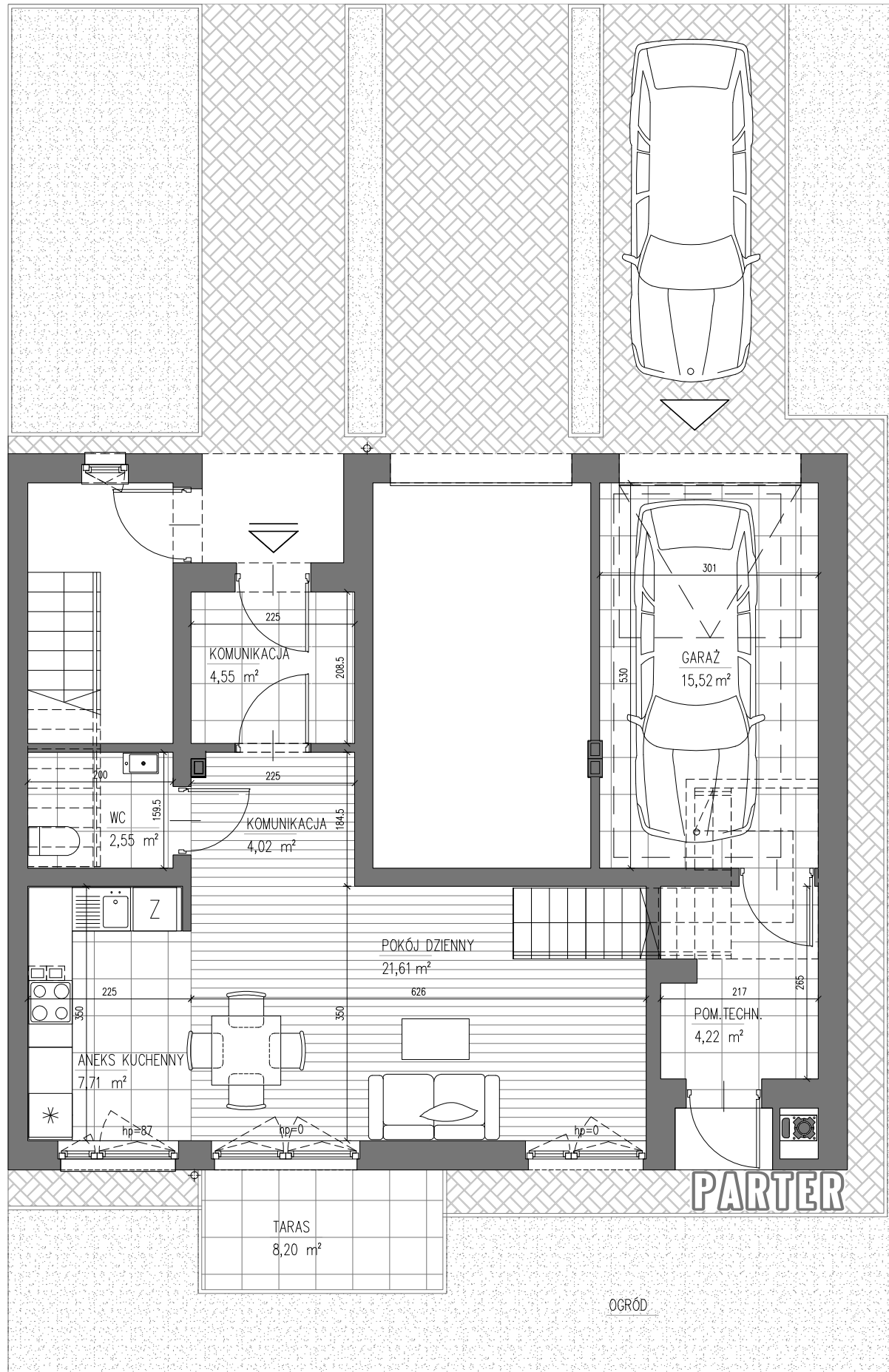
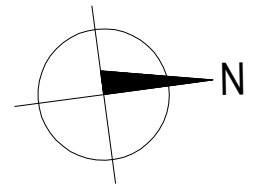
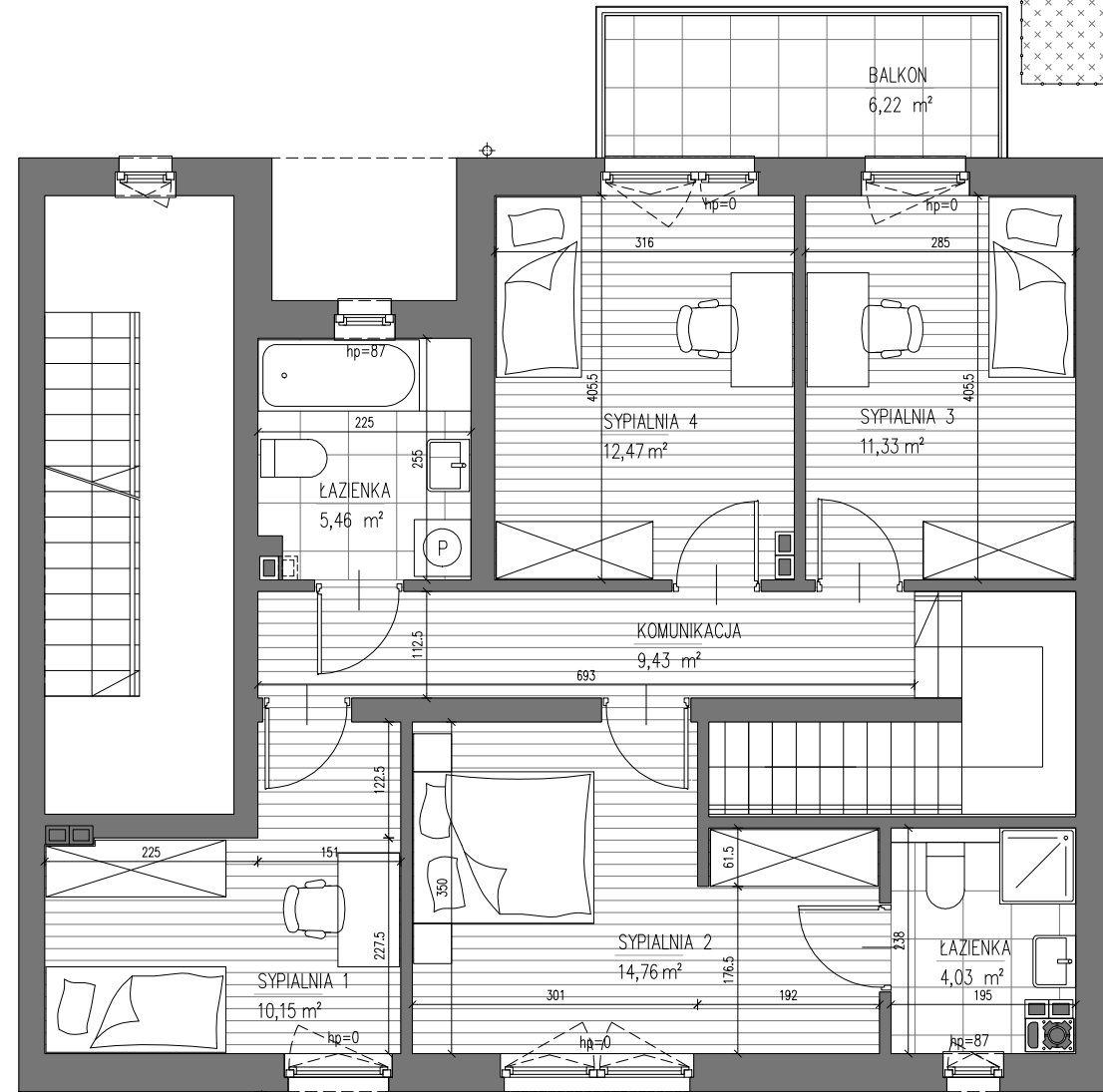
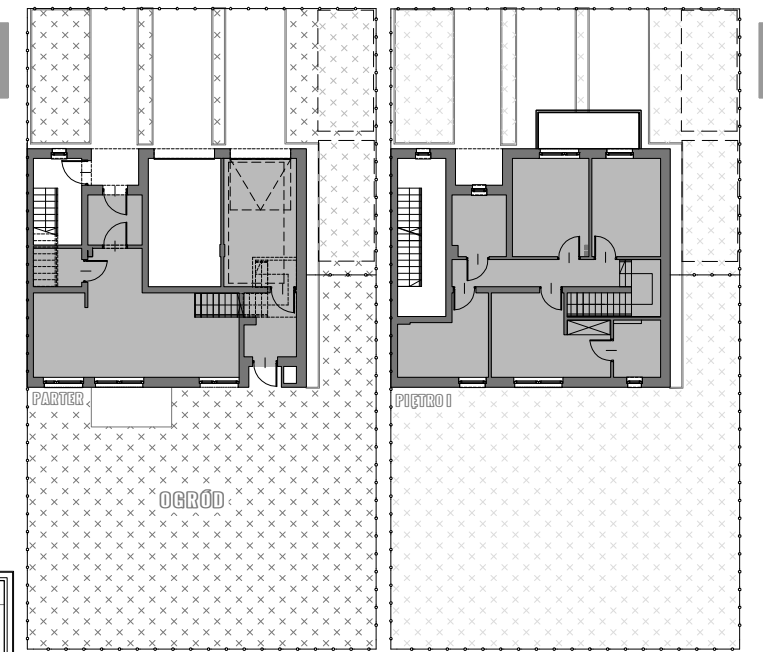


# BUDYNEK B4



MIESZKANIE	103,56m <sup>2</sup>
BALKONY I TARASY	14,42m <sup>2</sup>
GARAŻ	15,52m <sup>2</sup>
KOMUNIKACJA I POM.TECH.	8,77m <sup>2</sup>
OGRÓD	159,0m <sup>2</sup>



# MIESZKANIE 7

GENA LOKALU brutto.....

