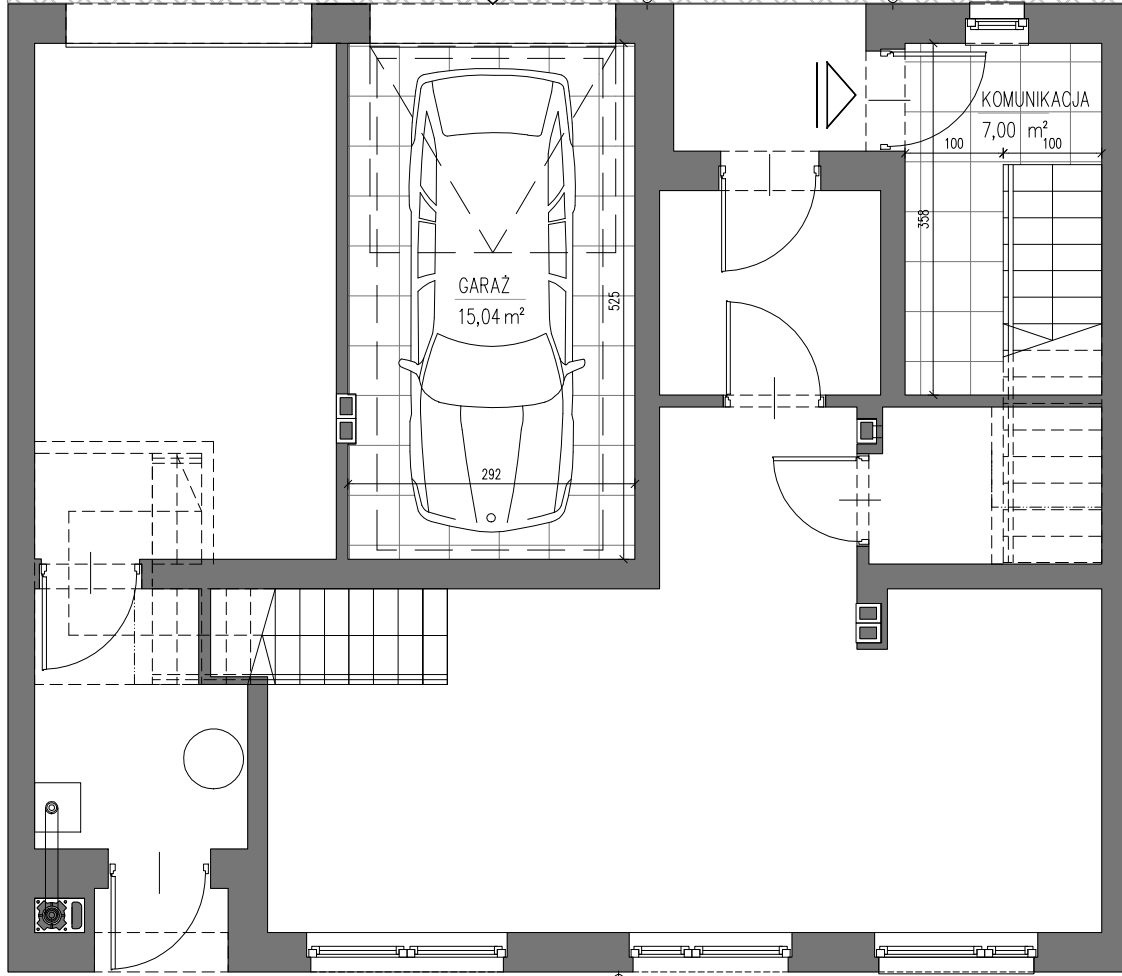
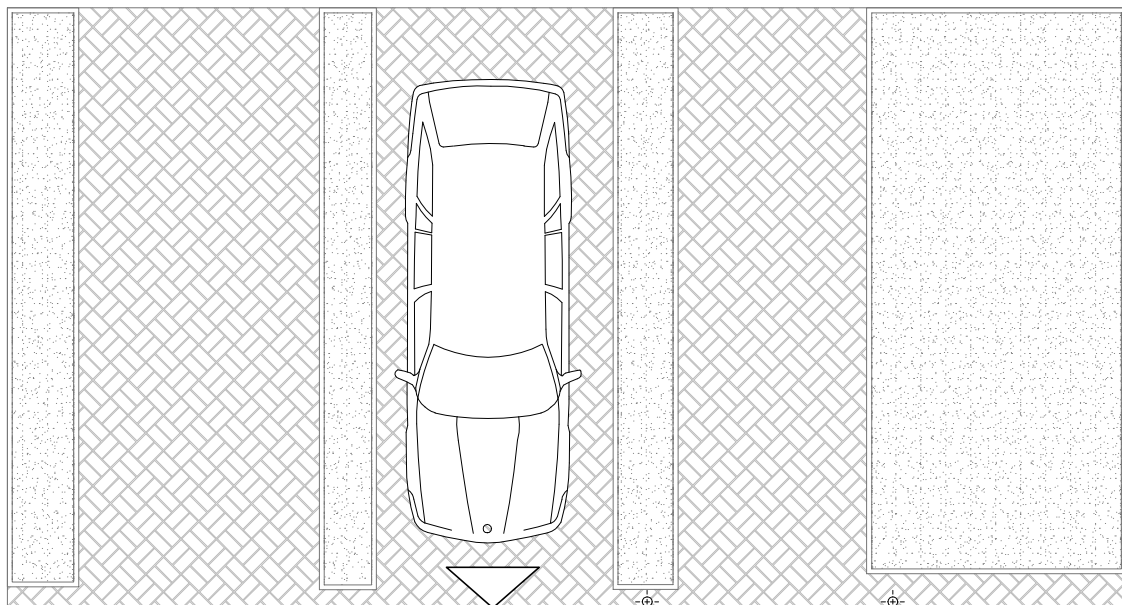


BUDYNEK G3



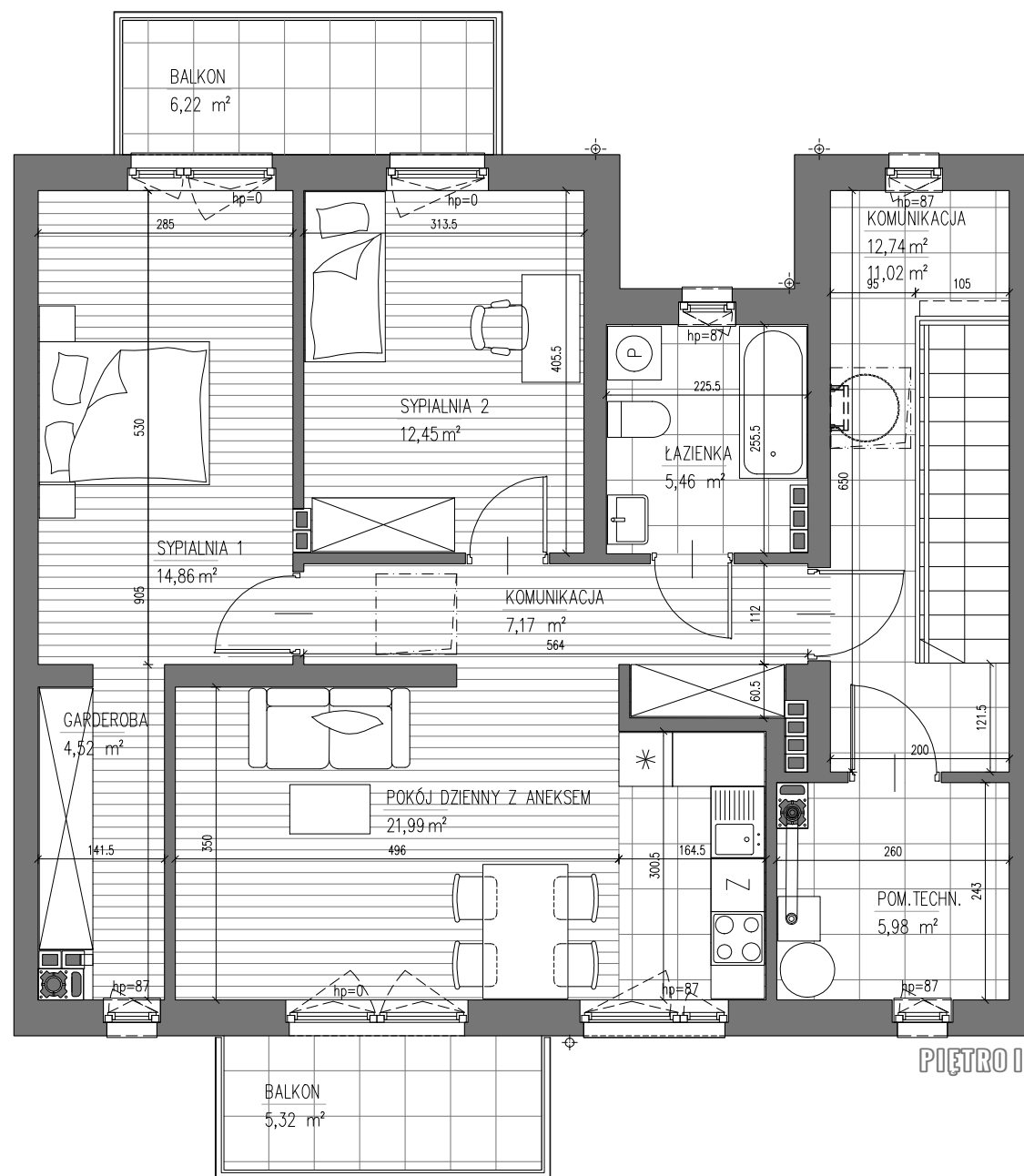
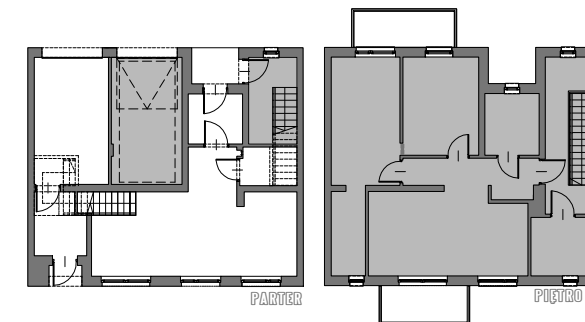
PARTER

MIESZKANIE 66.45m²

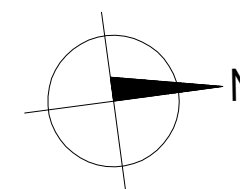
BALKONY I TARASY 11.54m²

GARAŻ 15.04m²

KOMUNIKACJA I POM.TECH. 36.74m²



PIĘTRO II



0 1m 2m 3m

GENA LOKALU brutto

MIESZKANIE 6

