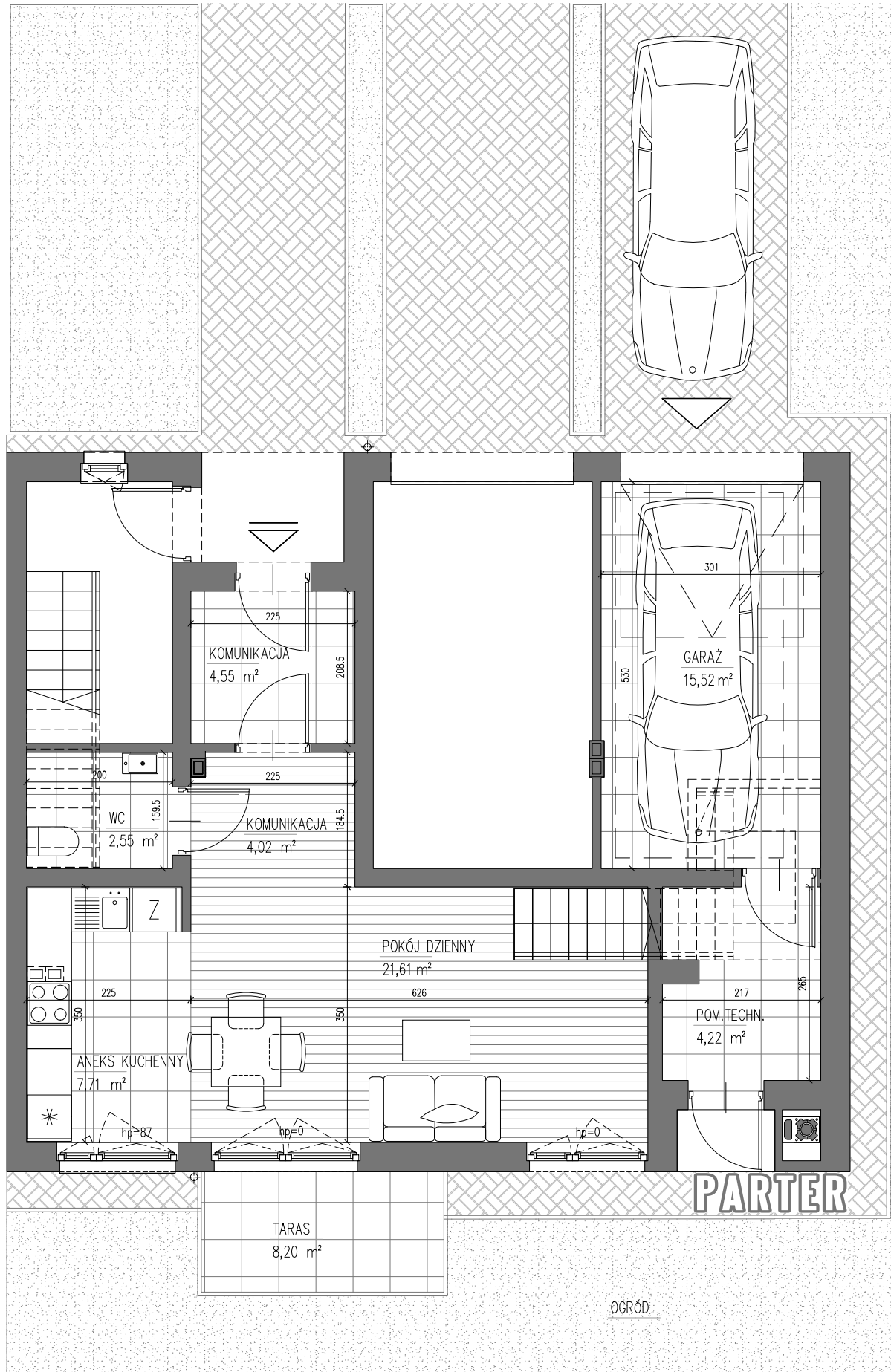
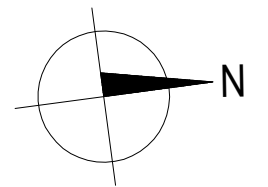
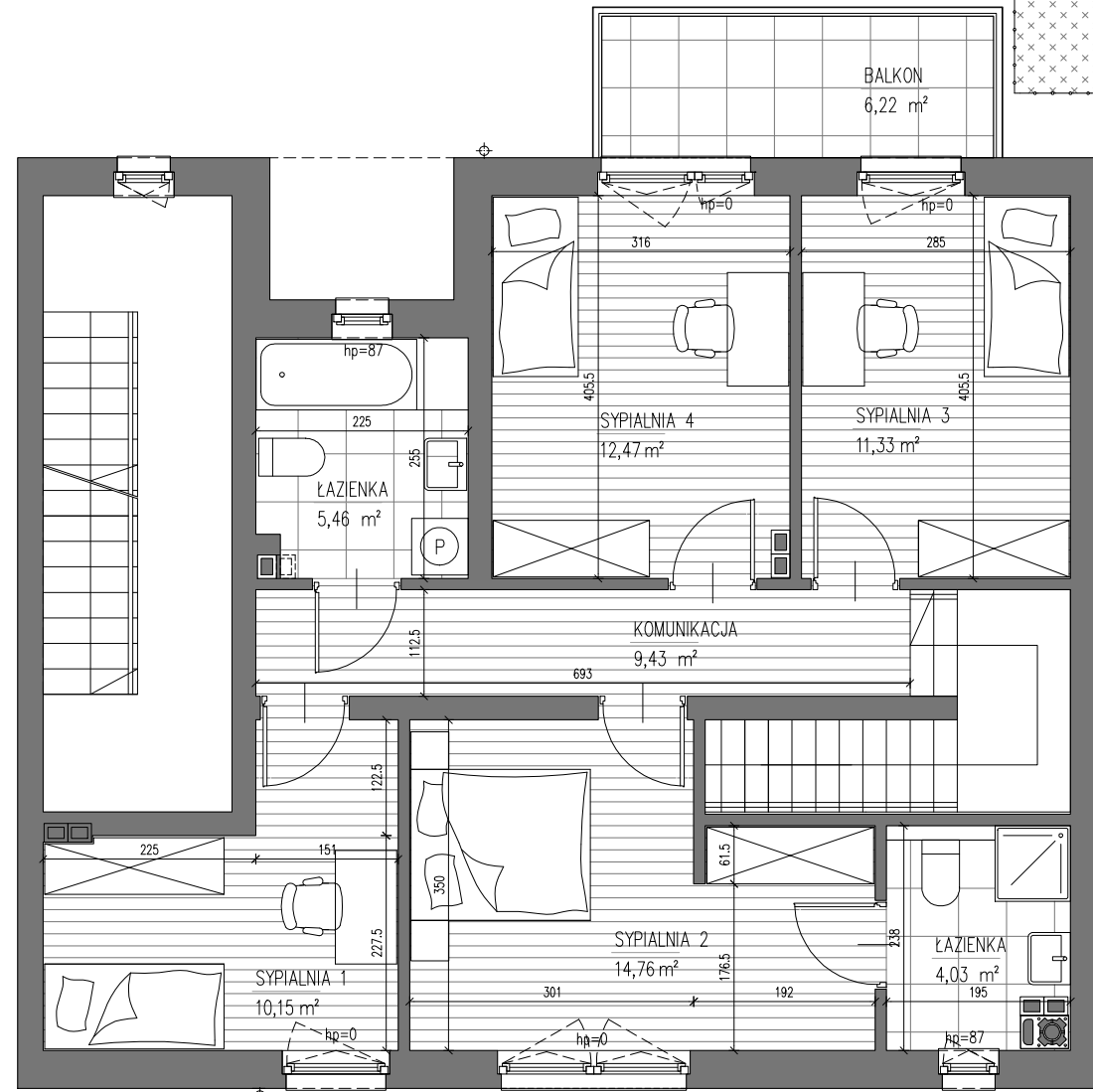
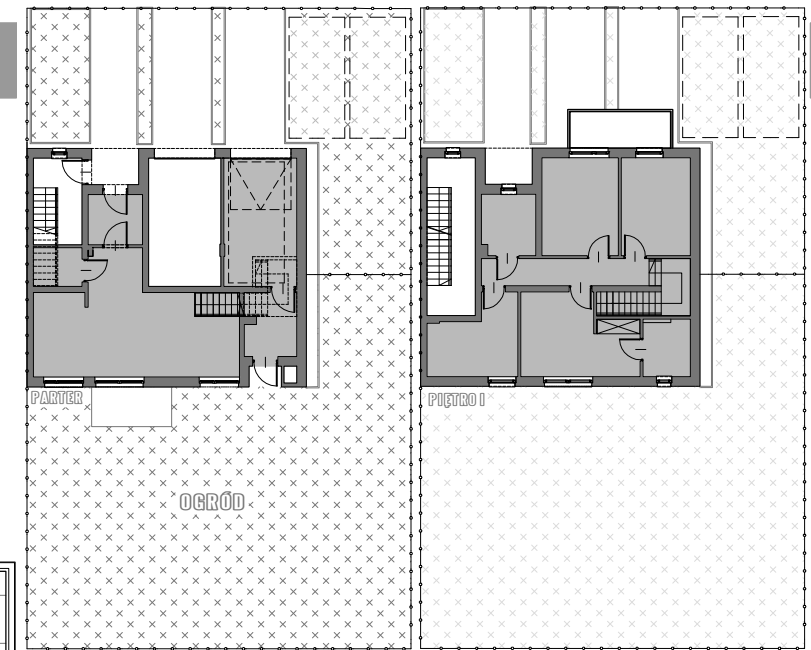


BUDYNEK G4



- MIESZKANIE** 103,56 m²
- BALKONY I TARASY** 14,42 m²
- GARAŻ** 15,52 m²
- KOMUNIKACJA I POM. TECH.** 8,77 m²
- OGRÓD** 181,0 m²



MIESZKANIE 7

CENA LOKALU brutto

