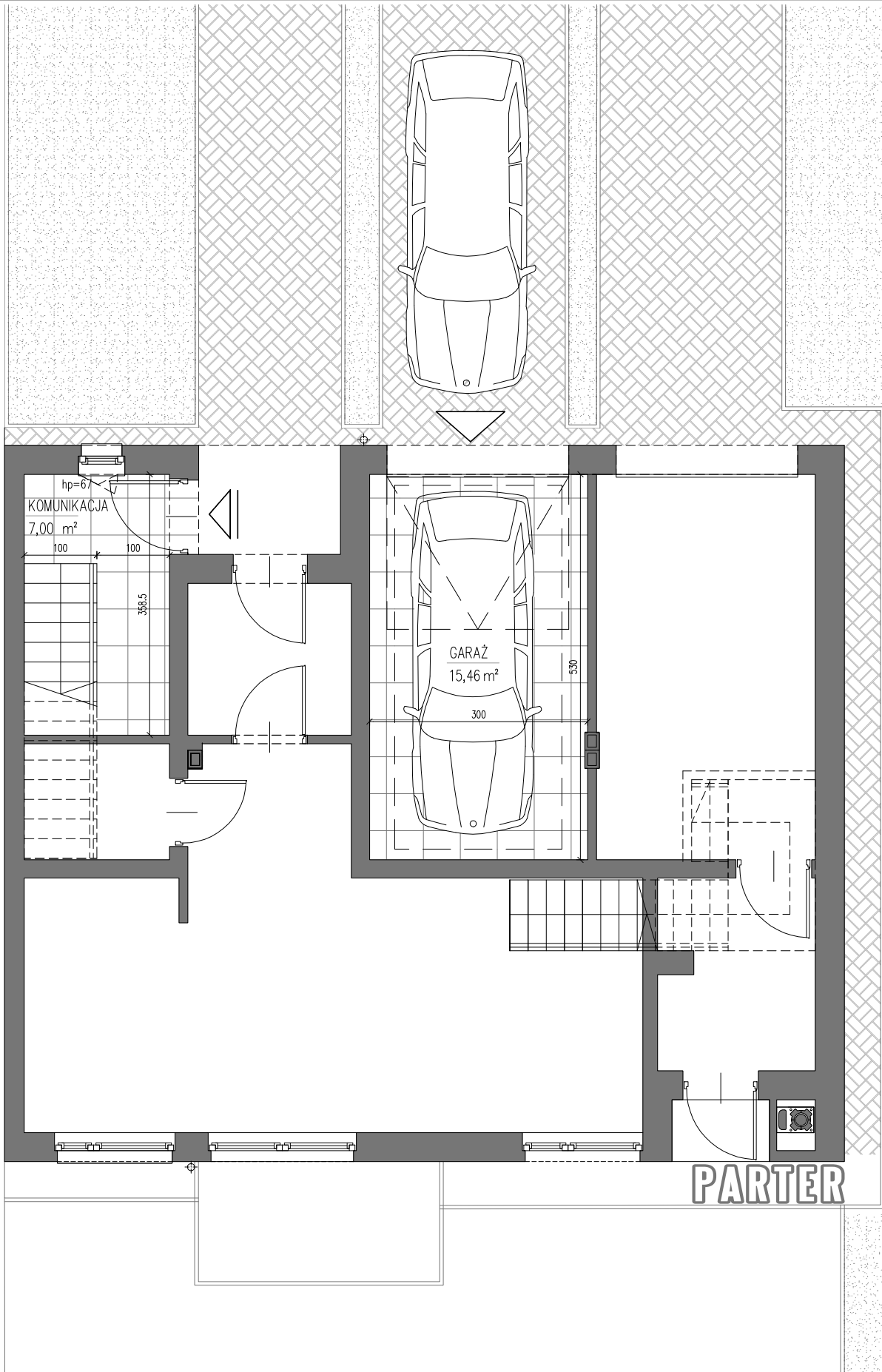
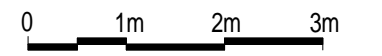
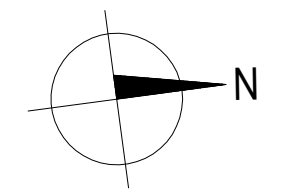
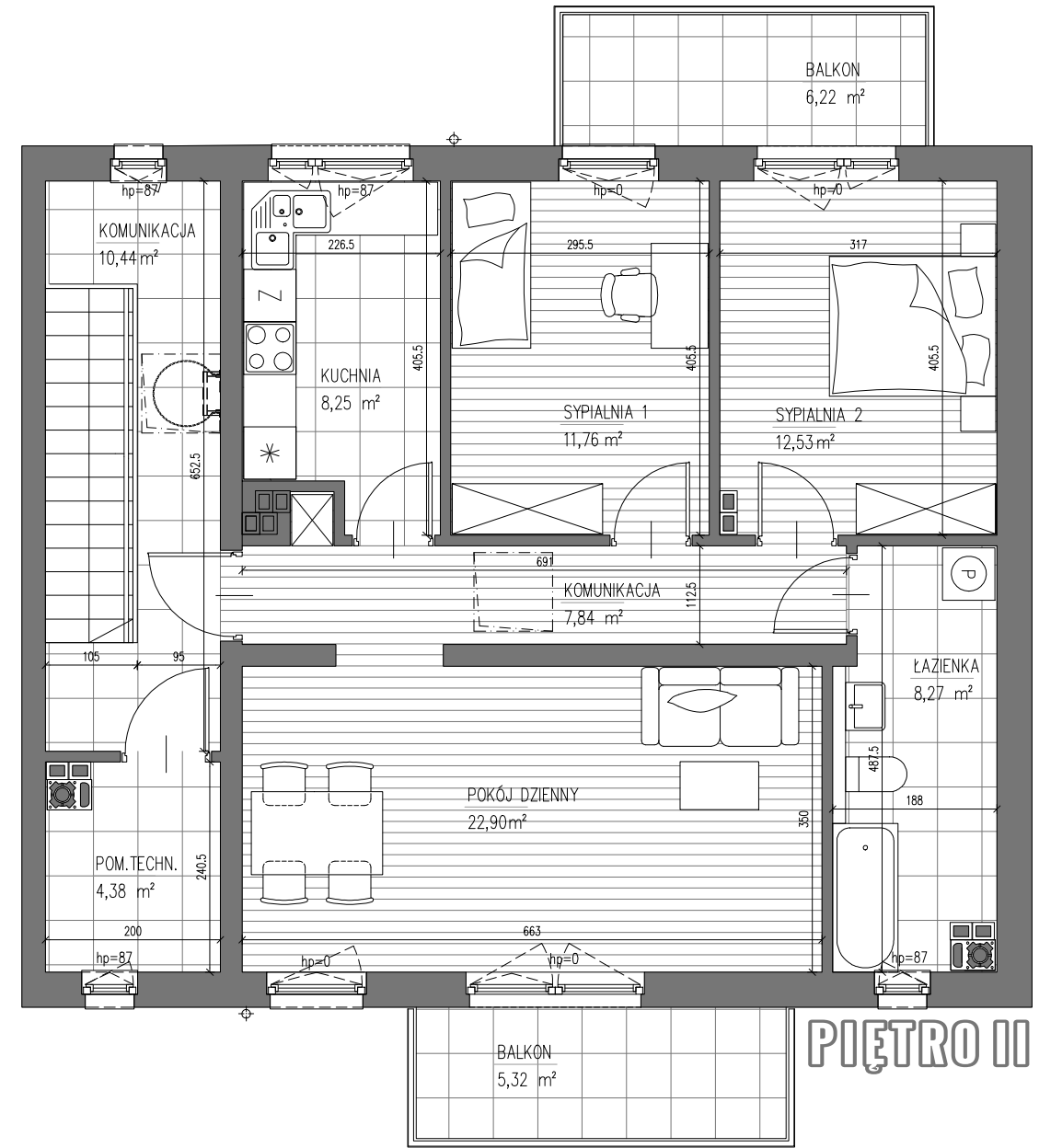
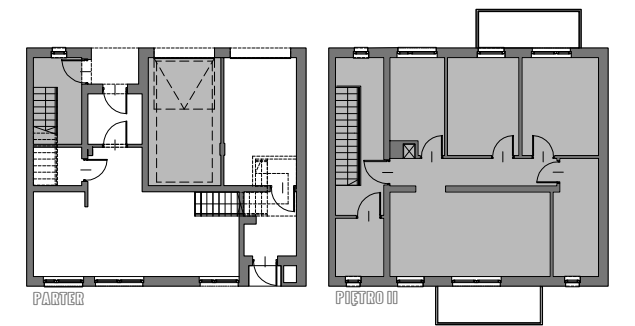


# BUDYNEK G4



- MIESZKANIE** 71,55m<sup>2</sup>
- BALKONY I TARASY** 11,54m<sup>2</sup>
- GARAŻ** 15,46m<sup>2</sup>
- KOMUNIKACJA I POM.TECH.** 32,42m<sup>2</sup>



# MIESZKANIE 8

CENA LOKALU brutto .....

